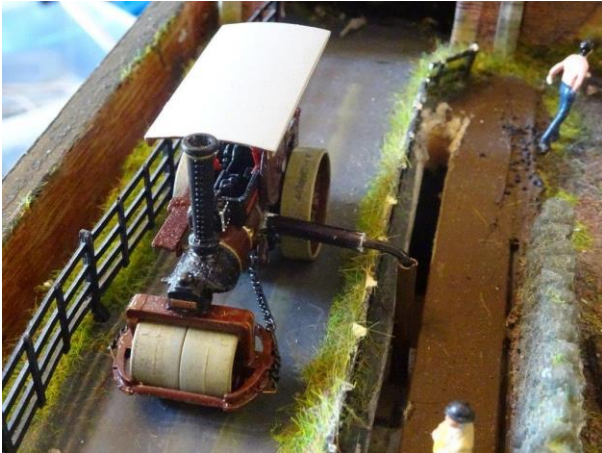
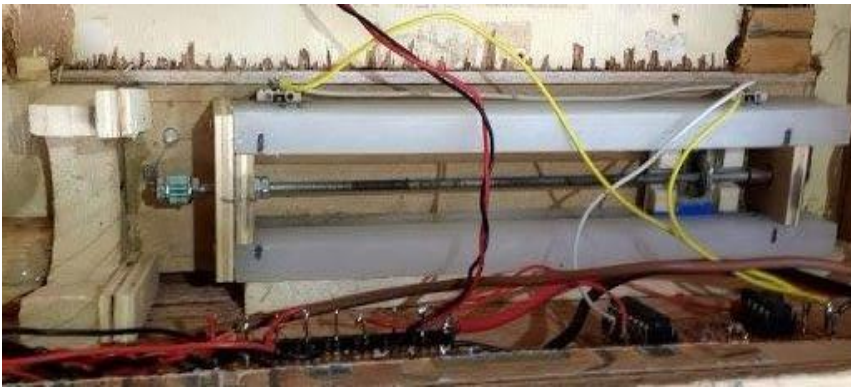


The Road Roller

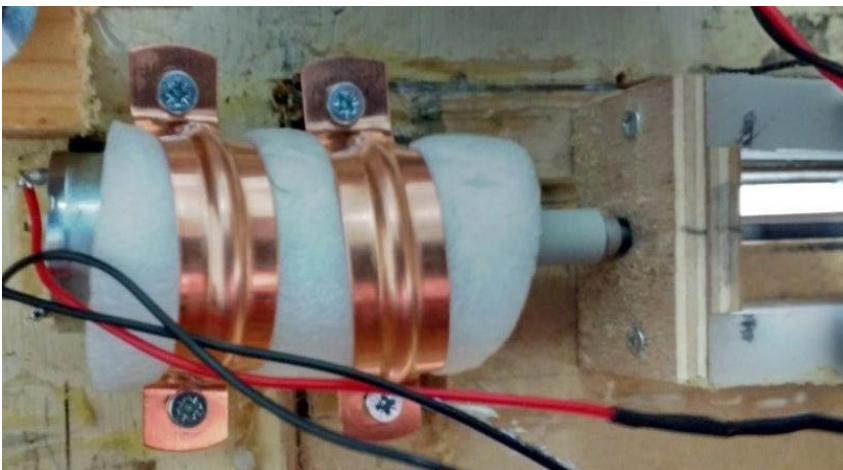


The road roller, a feature of Backen Forth, uses the simple principle that if a nut is prevented from turning on a threaded rod it must move along the rod if the rod is turned.

The image on the left shows a view not seen by the public. A linkage, actually an Allen key, connects the roller via a slot cut in the base board to the mechanism underneath. This is hidden from view by a hedge.



This image shows the underside of the layout. The threaded rod can be seen with a small carriage attached on the r.h.s. The carriage is glued with epoxy to a nut on the rod. The carriage is held between guide rails such that when the rod turns the carriage will move along the rod. The road roller linkage is attached to the carriage.



A 12V dc motor is attached to the rod and connected to a simple PIC circuit that controls the motor.

A microswitch, which can be seen in the second image, is fitted at either end of the travel of the carriage. When the carriage trips the microswitch the PIC circuit stops the motor, waits for a fixed period and then reverses the voltage polarity to the motor and the carriage direction is reversed.

Keith 31/03/20

Click [HERE](#) to watch video